



# GROWING TOGETHER

OUR MINISTRY PROJECTS FOR 2019

**This Spring, we are raising funds for four projects here at Bethel.**

We are thankful for the many people who support the ministry of Bethel and we are thankful for our building as it has served as our home base in which to worship and minister to our community.

However our building is always in need of some TLC to keep operating and serve the needs of our community.

As in previous years, we would like to present the opportunity for each of us to give to one or more specific special projects to "improve our serve" together at Bethel.

*Please pray about giving from your tax return toward one of our projects.*

## PROJECTS LIST

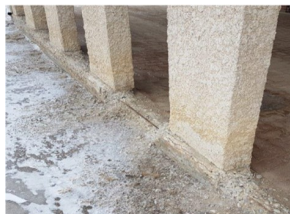
Excess designated funds will be put towards priority list projects.

**#1 Front Entrance \$38,000**

**Priority project due to permits**

Over the past three years it has become more apparent we need to make improvements to our front entrance. Although some funds have been assigned to this area, the project could not be completed because of permit requirements from the city. Now that permits have been secured and engineers have been agreed upon, we are hoping to complete the job by this summer. Improvements include repairing grade beam, new sidewalks to parking lot, and new pad under canopy.

**Designation: Front Entrance**



# GROWING TOGETHER

OUR MINISTRY PROJECTS FOR 2019

**This Spring, we are raising funds for four projects here at Bethel.**

We are thankful for the many people who support the ministry of Bethel and we are thankful for our building as it has served as our home base in which to worship and minister to our community.

However our building is always in need of some TLC to keep operating and serve the needs of our community.

As in previous years, we would like to present the opportunity for each of us to give to one or more specific special projects to "improve our serve" together at Bethel.

*Please pray about giving from your tax return toward one of our projects.*

## PROJECTS LIST

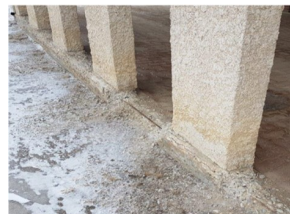
Excess designated funds will be put towards priority list projects.

**#1 Front Entrance \$38,000**

**Priority project due to permits**

Over the past three years it has become more apparent we need to make improvements to our front entrance. Although some funds have been assigned to this area, the project could not be completed because of permit requirements from the city. Now that permits have been secured and engineers have been agreed upon, we are hoping to complete the job by this summer. Improvements include repairing grade beam, new sidewalks to parking lot, and new pad under canopy.

**Designation: Front Entrance**



# GROWING TOGETHER

OUR MINISTRY PROJECTS FOR 2019

**This Spring, we are raising funds for four projects here at Bethel.**

We are thankful for the many people who support the ministry of Bethel and we are thankful for our building as it has served as our home base in which to worship and minister to our community.

However our building is always in need of some TLC to keep operating and serve the needs of our community.

As in previous years, we would like to present the opportunity for each of us to give to one or more specific special projects to "improve our serve" together at Bethel.

*Please pray about giving from your tax return toward one of our projects.*

## PROJECTS LIST

Excess designated funds will be put towards priority list projects.

**#1 Front Entrance \$38,000**

**Priority project due to permits**

Over the past three years it has become more apparent we need to make improvements to our front entrance. Although some funds have been assigned to this area, the project could not be completed because of permit requirements from the city. Now that permits have been secured and engineers have been agreed upon, we are hoping to complete the job by this summer. Improvements include repairing grade beam, new sidewalks to parking lot, and new pad under canopy.

**Designation: Front Entrance**



## #2 Play Structure Children's Ministry \$3,000

One of our most valuable resources is our children.

A request from our children's ministry department is for a bouncy castle for ministry and outreach. In our effort to reach out to the young ones this will be a valuable resource.



**Designation: Bouncy Castle**

## #2 Play Structure Children's Ministry \$3,000

One of our most valuable resources is our children.

A request from our children's ministry department is for a bouncy castle for ministry and outreach. In our effort to reach out to the young ones this will be a valuable resource.



**Designation: Bouncy Castle**

## #2 Play Structure Children's Ministry \$3,000

One of our most valuable resources is our children.

A request from our children's ministry department is for a bouncy castle for ministry and outreach. In our effort to reach out to the young ones this will be a valuable resource.



**Designation: Bouncy Castle**

## #3 Security Cameras \$10,000

An increasing concern is that we are becoming more vulnerable to vandalism and destruction to our facility. On a number of occasions equipment has been broken and compromised. A couple of weeks ago we had our back door broken and have had no recourse due to the fact there was no witness to this occurrence. The police have strongly advised Bethel to put in a good surveillance system, which will help protect our property and identify perpetrators. To install and wire a system and hard drive recording system will cost about \$10,000.



**Designation: Security Cameras**

## #3 Security Cameras \$10,000

An increasing concern is that we are becoming more vulnerable to vandalism and destruction to our facility. On a number of occasions equipment has been broken and compromised. A couple of weeks ago we had our back door broken and have had no recourse due to the fact there was no witness to this occurrence. The police have strongly advised Bethel to put in a good surveillance system, which will help protect our property and identify perpetrators. To install and wire a system and hard drive recording system will cost about \$10,000.



**Designation: Security Cameras**

## #3 Security Cameras \$10,000

An increasing concern is that we are becoming more vulnerable to vandalism and destruction to our facility. On a number of occasions equipment has been broken and compromised. A couple of weeks ago we had our back door broken and have had no recourse due to the fact there was no witness to this occurrence. The police have strongly advised Bethel to put in a good surveillance system, which will help protect our property and identify perpetrators. To install and wire a system and hard drive recording system will cost about \$10,000.



**Designation: Security Cameras**

## #4 Audio Visual Equipment \$10,000

As we continue to utilize and advance with ministry through multimedia and video, our audio visual equipment is a valuable part of our ministry. In taking strides to reach our younger audiences these ministry materials become even more crucial. Our system is greatly over due for maintenance, upgrading, and replacement. This \$10,000 investment will go a long way in improving our services and reaching our community.



**Designation: Audio Visual**

## #4 Audio Visual Equipment \$10,000

As we continue to utilize and advance with ministry through multimedia and video, our audio visual equipment is a valuable part of our ministry. In taking strides to reach our younger audiences these ministry materials become even more crucial. Our system is greatly over due for maintenance, upgrading, and replacement. This \$10,000 investment will go a long way in improving our services and reaching our community.



**Designation: Audio Visual**

## #4 Audio Visual Equipment \$10,000

As we continue to utilize and advance with ministry through multimedia and video, our audio visual equipment is a valuable part of our ministry. In taking strides to reach our younger audiences these ministry materials become even more crucial. Our system is greatly over due for maintenance, upgrading, and replacement. This \$10,000 investment will go a long way in improving our services and reaching our community.




**Designation: Audio Visual**

## How Can I Contribute?

 **Online** [www.bethelbrandon.ca](http://www.bethelbrandon.ca)

 **Text to Give** text 84321

 **Cash/Cheque** payable to "Bethel"

 **Debit/Credit** at giving station in foyer


To contribute toward a specific project, you can choose the project name when giving online. Or please mark the project's "Designation" on your offering envelope.

## How Can I Contribute?

 **Online** [www.bethelbrandon.ca](http://www.bethelbrandon.ca)

 **Text to Give** text 84321

 **Cash/Cheque** payable to "Bethel"

 **Debit/Credit** at giving station in foyer

To contribute toward a specific project, you can choose the project name when giving online. Or please mark the project's "Designation" on your offering envelope.

## How Can I Contribute?

 **Online** [www.bethelbrandon.ca](http://www.bethelbrandon.ca)

 **Text to Give** text 84321

 **Cash/Cheque** payable to "Bethel"

 **Debit/Credit** at giving station in foyer

To contribute toward a specific project, you can choose the project name when giving online. Or please mark the project's "Designation" on your offering envelope.